

ALL QUESTIONS WORTH 4 POINTS

1. Select the group to which the very small organisms that cause tuberculosis and tetanus belong.

- A) Bacteria B) Protists C) Plants
D) Viruses E) Mushrooms

2. The transformation of ice into water at room temperature is called:

- A) Dilation B) Melting C) Condensation
D) Boiling E) Liquefaction

3. Which of the following statements is true about the champignon mushroom?



- A) It has a single cell body B) It is a parasitic organism
C) It contains chlorophyll D) It is part of the fungi group
E) It lives in dry areas

4. The mass of the same body:

- A) Is greater on the Moon than on Earth
B) Is greater on Earth than on the Moon
C) Is greater at the North Pole than at the Equator
D) Is greater at the Equator than at the South Pole
E) Is the same, regardless of where the body is located

5. Which of the following is a mammal that lives in the aquatic environment?

- A) Penguin B) Turtle C) Dolphin
D) Crab E) Jellyfish

6. Which of the following statements is true about sound:

- A) It is produced by sound sources through vibration
- B) It propagates most rapidly in a vacuum
- C) The echo can only be heard in small and heavily furnished rooms
- D) People hear infrasound and ultrasound best
- E) Sound intensity is measured in kilometres per hour

7. Moss and ferns have the following common characteristic:



- A) They reproduce through flowers
- B) They live in wet areas
- C) They form cones
- D) They live in dry areas
- E) They form lichens

8. Select the correct statement:

- A) The image formed in a plane mirror is real and equal in size to the object
- B) The image formed in a plane mirror is upright, virtual and smaller in size than the object
- C) The image formed in a plane mirror is virtual and equal in size to the object
- D) The image formed in a plane mirror will be upright, virtual and very big if the object is very close to the mirror
- E) The rear view mirror is not a plane mirror

9. The seed has a single cotyledon in the following plants:

- A) Pine
- B) Peas
- C) Beans
- D) Ferns
- E) Grass

10. Sound waves travel most quickly through:



- A) air
- B) water
- C) wood
- D) steel
- E) mercury

11. What group of vertebrates do turtles belong to?



- A) Reptiles B) Fish C) Birds
D) Amphibians E) Mammals

12. We cannot say about matter that:

- A) It has mass and occupies space
B) It exists in three states of aggregation, namely, solid, gaseous and liquid
C) It changes its state of aggregation when its temperature changes
D) It has mass and does not occupy space
E) It has large spaces between particles when it is in the gaseous state

13. Which of the following is a common characteristic of bean and maize seeds?



- A) They are monocotyledonous B) They contain a root
C) They contain two cotyledons D) They contain an embryo
E) They are kidney-shaped

14. Which of the following statements is true about a curved mirror?

- A) It is a face of a prism.
B) If it is concave, it will form only virtual images.
C) If it forms a real image, the image will be always inverted.
D) If it forms a real image, the image will be always upright.
E) If the object is located in the principal focus, the image formed is equal to the object.

15. Which of the following groups does the animal in the attached image belong to?



- A) Echinoderms B) Mollusks C) Arthropods
D) Worms E) Sponges

16. Which of the following is a non-renewable energy source?

- A) The tidal energy B) The solar energy C) The nuclear energy
D) The wind energy E) The flowing water energy

17. What part of the seed contains a tiny plant inside?

- A) The embryo B) The cotyledons C) The endosperm
D) The ovary E) The testa

18. Which of the following is kinetic energy?

- A) The energy in the wound up spring of a toy car
B) The energy in the stretched rubber strings of a catapult
C) The energy stored in the nucleus of an atom
D) The energy in the flowing water of a river
E) The energy stored in food

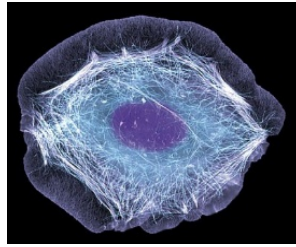
19. Choose the correct association between the disease and its cause.

- A) Typhoid - worms B) Tooth decay - bacteria C) Cholera - viruses
D) Influenza - fungi E) Measles - protists

20. Which of the following statements is true about light?

- A) It propagates in a straight line
B) It propagates through any medium at the same speed
C) All objects are transparent in different degree
D) When an opaque object comes in the path of light, the size of the shadow is the same, regardless of the size of the object
E) It is emitted by any object in the Universe

21. While looking at a human cell under a microscope, we cannot see:



- A) The cell membrane B) The nucleus C) The cell walls
D) The cytoplasm E) The vacuole

22. The astronauts can see the Earth from space because:



- A) It is an object illuminated by the Sun
B) It is a natural light source
C) People turn on lot of light bulbs
D) It is very large and emits its own light
E) It receives light from the Moon

23. What substance enters the leaf through stomata and is used in photosynthesis?

- A) Oxygen B) Water C) Minerals
D) Carbon dioxide E) Glucose

24. The phenomenon of charging a body with electricity is called:

- A) Magnetization B) Lightning C) Friction
D) Electrification E) Electrical interaction

25. In which part of the eye the receptors for vision are located?

- A) Sclera B) Choroid C) Cornea
D) Retina E) Lens

26. Friction cannot be reduced by:

- A) Polishing the surfaces of the objects
- B) Using rollers or wheels
- C) Using lubricants
- D) Using ball bearings
- E) Using sandpaper under the moving objects

27. In the ecosystem of a river, the producers are represented by:



- A) Turtles
- B) Fishes
- C) Seaweeds
- D) Jellyfishes
- E) Frogs

28. Two bodies A and B have the same mass, but A is made of iron and B is made of aluminium. It is true that:

- A) The two bodies have the same density
- B) The two bodies have the same volume
- C) Body B has both density and volume smaller than body A
- D) Body B has a lower density but a greater volume than body A
- E) The two bodies will have the same mass only if they have equal volumes

29. Which of the following statements is true about the abiotic (non-living) factors in the desert?

- A) Precipitation is abundant.
- B) Plants store water.
- C) Animals withstand extreme temperatures.
- D) Plants have leaves turned into thorns.
- E) Soil is dry.

